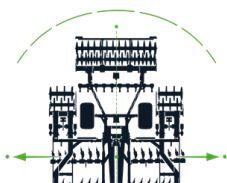


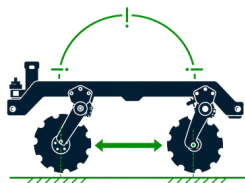
HEAVY DISC HARROW

NEXION

Stubble cultivation is the first tillage operation after harvest, which after a short "rest" period of the soil restores its activity and prepares it for subsequent work. Proper utilization of its potential and rational management of production resources translate into better results and higher farm profitability.



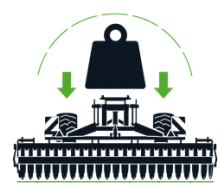
Up to 8 m working width



Increased spacing between discs

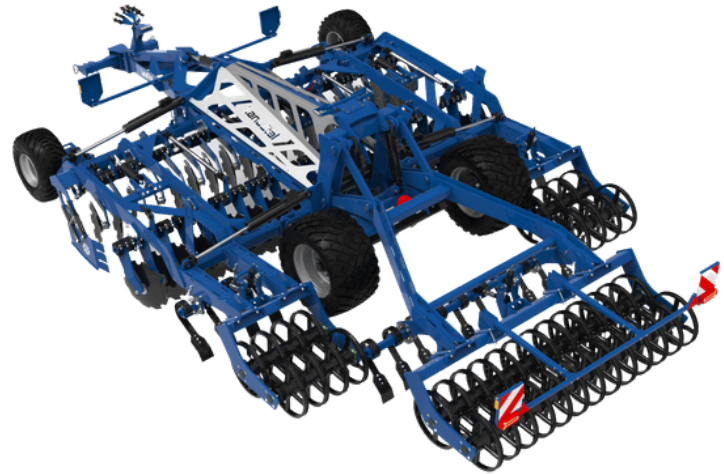
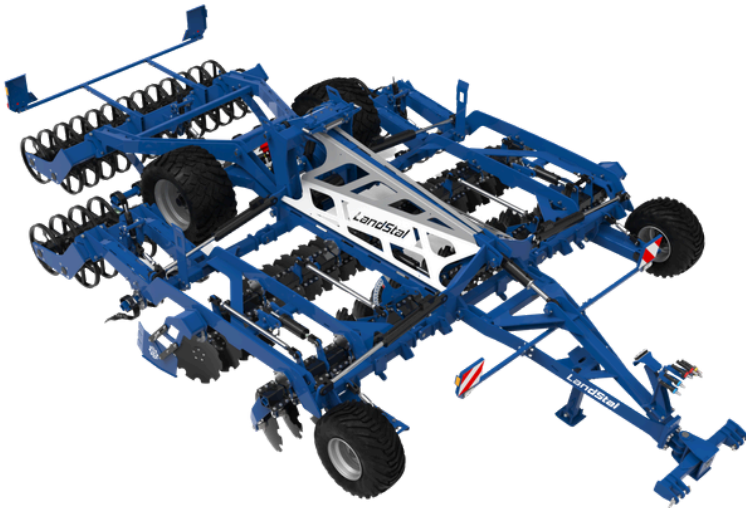


Precise contour following



Increased weight

Why NEXION?



The machine ensures precise and stable operation thanks to depth adjustment via the discs and their variable setting angle. The ability to adjust the second row eliminates machine side-drift, and ****LongLife**** components guarantee durability and lower operating costs. The frame with an extensive hydraulic system allows for ****contour following****. Increased clearances and row spacing improve the flow of residues, and a solid frame with hydraulics is responsible for good contour following. **The machine is available in widths of 5, 6, 7, and 8 m.** Its large mass allows for fast and stable work – regardless of the tillage depth, while wide equipment options allow for configuration to specific farm needs.

MARKET STANDARD	NEXION
No contour following	Contour following
Row spacing – 100 cm	Row spacing – 120 cm
Weight: 5800*	Weight: 8150*
Uniform disc angle regardless of depth	Variable disc angle depending on working depth
8 m version: mounted on a long carriage	8 m version: Compact and maneuverable design

*Weight specified for the 5-meter version of the machine

Front tools

- optional



Crushboard

To achieve even better leveling and create a crumbly structure (crushing), optional hydraulic boards are available. Additional equipment allows, among other things, for the crushing of large clods after plowing, thus ensuring optimal field preparation before sowing.



Knife Roller

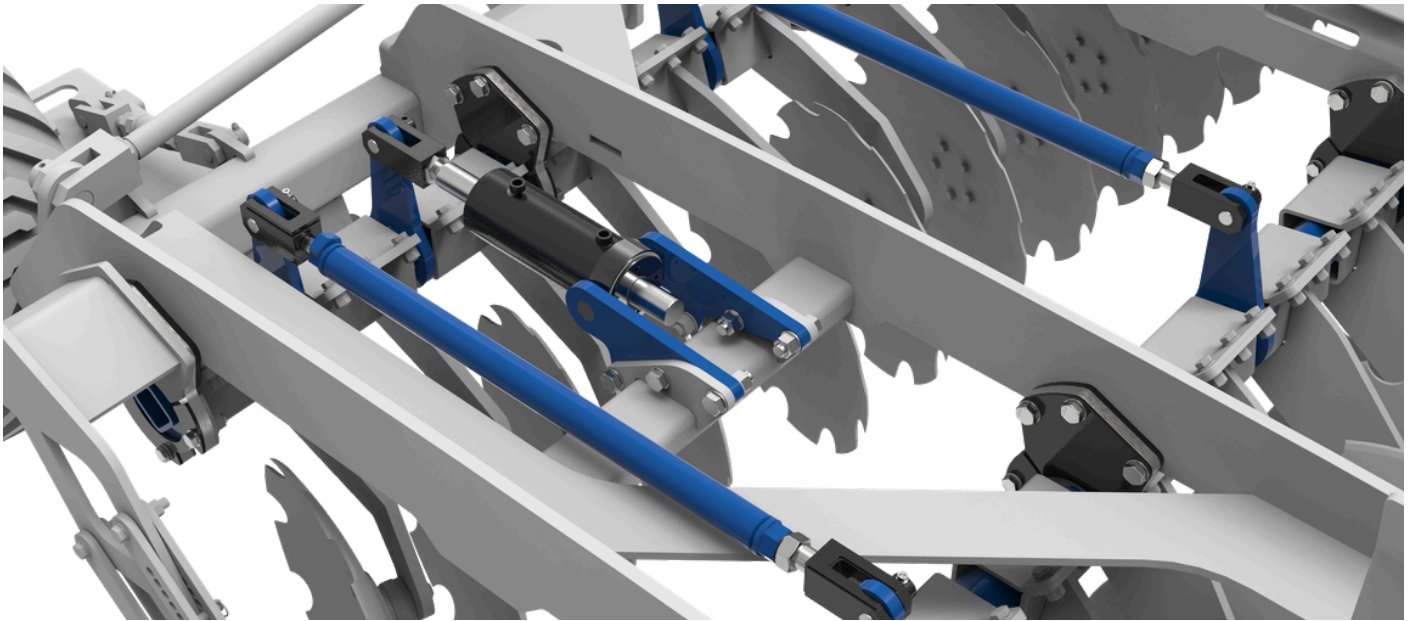
The Knife Roller allows for very shallow soil cultivation with simultaneous intensive stubble shredding, e.g., during the first pass after rapeseed harvest. It also performs excellently on high cover crops and on corn or sunflower stubble. Tall crop residues are effectively cut across the direction of travel and then smoothly directed to the disc unit.

In the face of increasingly challenging conditions and growing demands, good field hygiene and proper soil preparation are becoming essential. That is why Landstal offers the NEXION disc harrow, designed to meet the modern requirements of soil cultivation.



Crushboard – in front of the roller (hydraulic adjustment)

A new form of depth adjustment



In the NEXION disc harrow, we have implemented a completely new form of working depth adjustment. The depth is set by changing the position of entire disc rows, which allows for deeper or shallower work while maintaining parallel frame guidance relative to the ground.

Easy and intuitive adjustment and setting of the working depth

- ✓ Full independence in adjusting the working depth of the front and main tools
- ✓ Ability to adjust the second row of discs relative to the first, which prevents machine side-drift
- ✓ A convenient solution for rapid depth changes, e.g., for deeper work in tramlines or on headlands

Increased clearance, always optimally adjusted to the working depth

- ✓ The deeper the work, the greater the distance between the discs and the main frame. As the working depth increases, the discs move away from the frame and the cultivation roller. This solution allows for the passage of a larger amount of crop residues.

Disc angle adjustment

The use of different disc angles in the rear and front rows guarantees aggressive soil penetration and excellent cutting of crop residues. This geometry ensures that the flow of soil is smoothly directed between the rows, preventing blockages. Additionally, a reduced discharge angle facilitates the uniform deposition of the mixed layer just before the packing roller, creating an ideal seedbed.



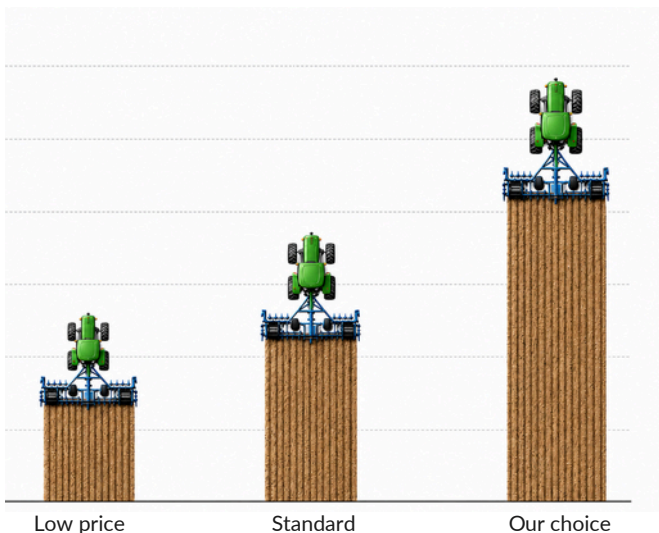
NEXION features discs mounted individually to the frame via rubber damping elements, allowing each to independently adapt to terrain irregularities. This enables intensive soil cultivation instead of merely moving it around, even on uneven fields. This solution also facilitates the flow of large amounts of plant residues and ensures high machine clearance. **High-quality rubbers with "memory" effect ensure the shock absorber does not deform, allowing the disc to always return to its original position. This solution guarantees that the disc working angle is always ideal, even after years of use.**

LongLife hubs and discs now as standard!

Maintenance-free hub

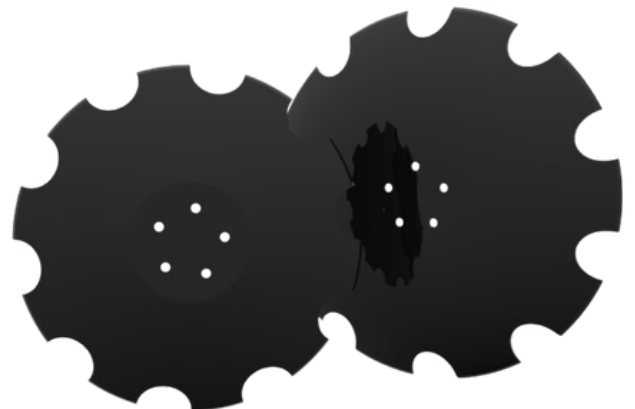
It's already a standard on the market! That's why we decided to go a step further. Our larger and more massive hub is designed for large acreages. **This solution has allowed us to extend the warranty to up to 5 years!**

There is no need to lubricate the disc bearings, which significantly reduces the total cost of operation and maintenance. Solutions based on slip rings have been used for many years in construction machinery to seal track rollers in crawler vehicles and perform reliably even in the most demanding working conditions.



Discs (6 mm - LongLife)

Since the beginning of our operations, our company has collaborated exclusively with the best suppliers in the industry. Steel and working element suppliers are our key partners. Due to the machine's intended use for work on large farms, we offer ****LongLife**** discs with a thickness of 6 mm as standard.



Solutions without compromises



Increased row spacing up to 120 cm

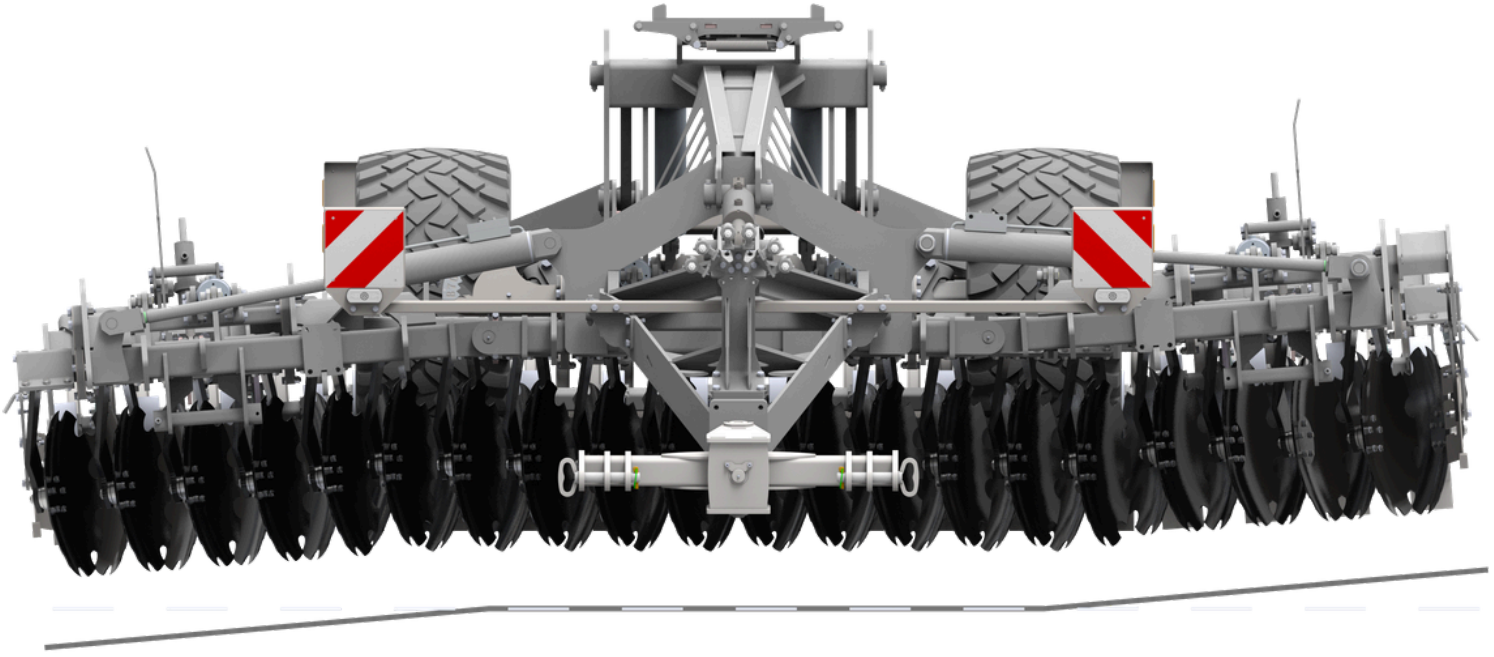


Increased clearances under the frame



The machine's large mass allows for stable and significantly faster work (up to 20 km/h); the weight of the transport carriage during operation adds downforce to the machine and prevents it from "bouncing"

Contour Following



Optimal adaptation to the field surface

The NEXION heavy disc harrow has been designed with optimal adaptation to terrain contours in mind, thanks to the division of the structure into separate segments. This design ensures that each machine section maintains an identical working depth, which is particularly important when cultivating fields with varied slopes and hillsides. Depending on the version, NEXION consists of outer and middle segments that independently follow the ground. Stability and guidance precision at the rear of the machine are provided by the cultivation rollers, while at the front, the individual sections rest on ****depth guide wheels**** or the hitch.



The entire machine frame optimally adapts to the terrain contours.

Customize your equipment

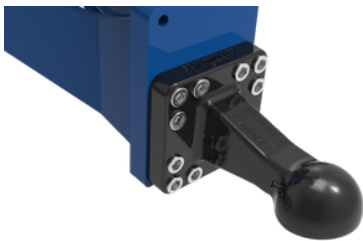
Double depth guide wheels

For working widths from 6 to 8 m, we recommend using ****double depth guide wheels****, which significantly improve the stability of the disc harrow's operation.



Adapting the unit to every type of tractor

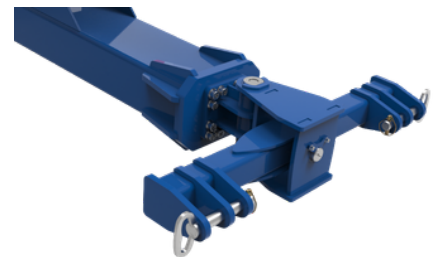
For all compact disc harrows, various hitching options are available, adapted to every tractor. The flange plate allows for quick and easy adjustment of mounting points. Thanks to the hitch on the lower links, it is also possible to efficiently change the suspension category – just turn the mounting bolts. This solution enables a perfect fit for any tractor, whether using category 2, 3, 3-N, 4, 4-N lower links, a ring hitch, or a ****K80**** ball hitch.



K80 ball hitch



Drawbar eye Ø40 mm or
Ø50 mm



Lower link cross shaft Cat.
3N, 3, 4N

Want to find out more?

Contact us!



SALES
+48 506 960 360
export@landstal.pl

or scan the QR code to explore our configurator.
Customize the machine to your needs, and our sales
representatives will get back to you with an offer!

